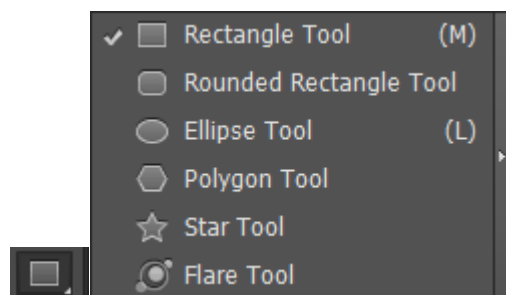
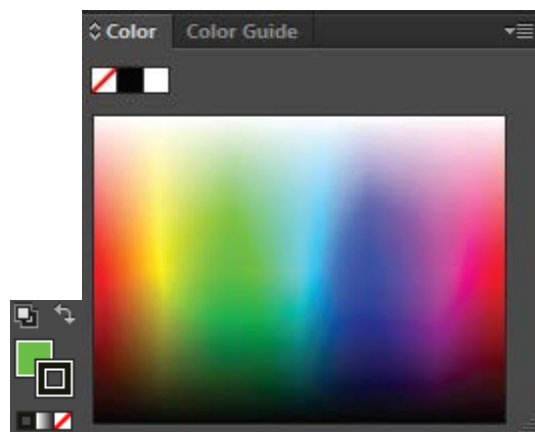


Exercise 1: Abstract Shape Design

Use the Shape Tools to experiment with making shapes:



Change the colors of your shapes and borders using the color picker:



Change the outline width of your shapes using the Stroke tool:



Create an abstract composition with different colored shapes.

After you are finished, export the image as a JPEG with the file name "Abstract".

Exercise 2: Clover Trace Design

Use the Pen tool to create the shapes of the stem and leaves of the clover.



Enlarge clover using Alt+Mouse Scroll:



Using the Pen Tool, create anchors around the outside of the stem, starting from the bottom side:



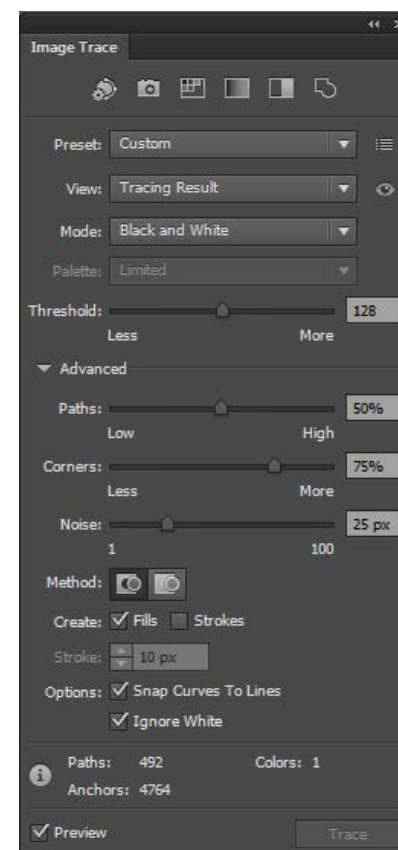
Use the Pen Tool to create the leaves and then recolor:



After you are finished, export the image as a JPEG with the file name "Clover".

Exercise 3: Landscape Design

Using the Image Trace Tool, turn photographs into vector graphics.



Using the Image Trace Tool and the Shape Tools, experiment to create a landscape image.

After you are finished, export the image as a JPEG with the file name "Landscape".

After you are finished, load the files onto the Assignment Submission form and answer the question about the exercises.